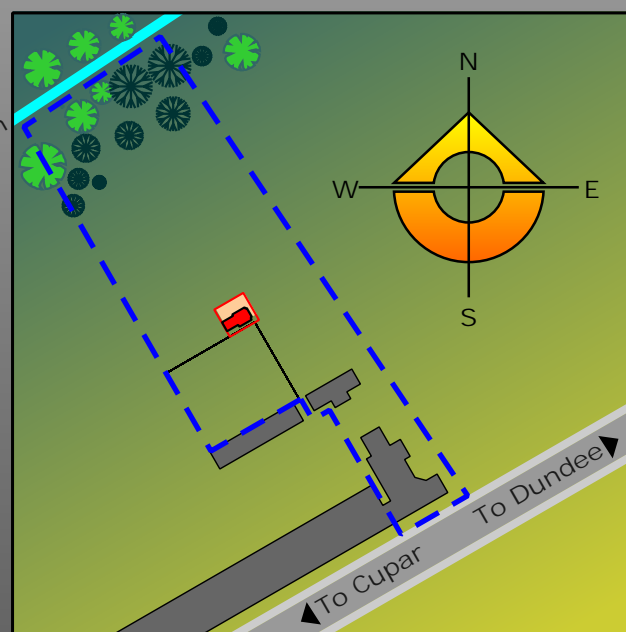




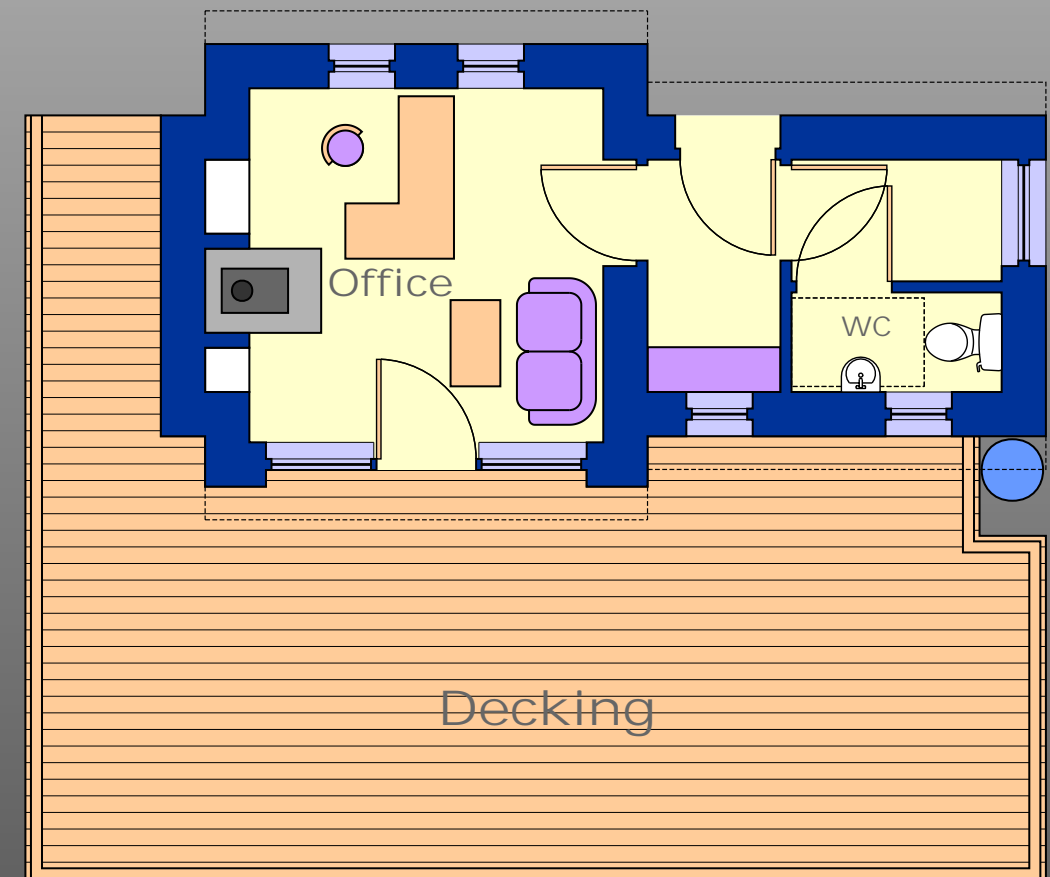
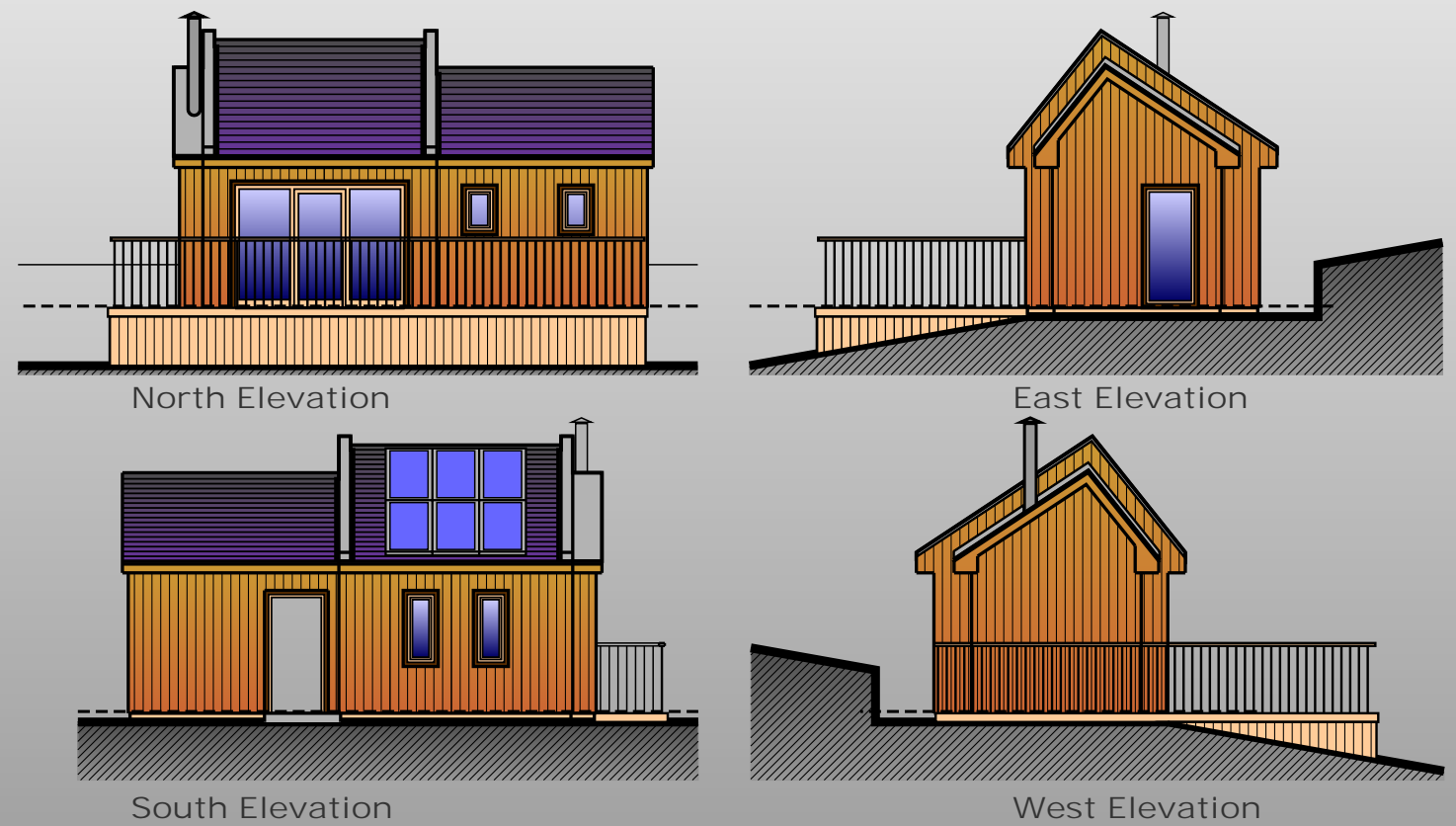
View from the site looking North

FEATURES

- Off-grid.
- Scottish Larch cladding.
- Scottish Timber build with sheep's wool insulation.
- Rainwater harvesting.
- Compost toilet.
- Grey water recycling.
- Solar PV panels with Battery pack.



Location Plan



Plan



Tom Wallace - Building Technology
Home Office, 84, Main Street, Dairsie, Fife